

Saddle size guide



To find the perfect Thorowgood saddle for your horse or pony you will need two simple measurements:

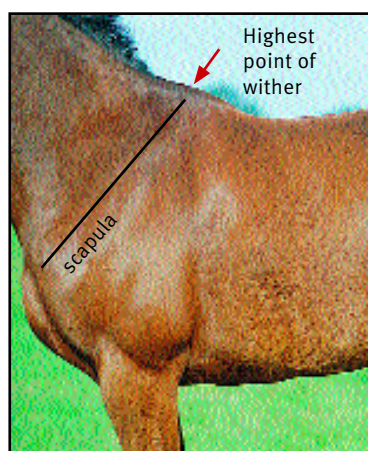
Back width. This refers to the shape across his back, which can vary from narrow to extra-wide.

Wither profile. This describes the curve of his withers, if you are looking from the side – low, regular or high.

Simply follow this step-by-step guide to taking accurate measurements...

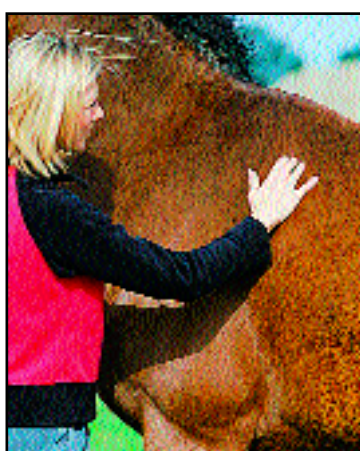
You will need:

- A helper to hold your horse on firm, level ground
- A piece of chalk
- A flexicurve, available from your nearest stockist or an art or office supply shop, measuring exactly 12" (30cms). A piece of stiff wire cut to the same length is a good alternative.
- A pen



Step 1

Make sure your horse is standing four-square with his head up and looking straight ahead. From the nearside (left), feel for the top edge of his shoulder-blade (scapula) with your fingers. Lifting the nearside foreleg will help you find the scapula if you are not sure.



Step 2

When you have located the highest point of the scapula, use the chalk to mark a point roughly three fingers' width behind it (towards the direction of the tail).



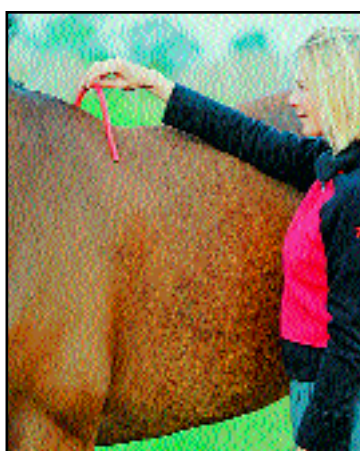
Step 3

Taking this mark as your starting point, mould your flexicurve up and over the withers.



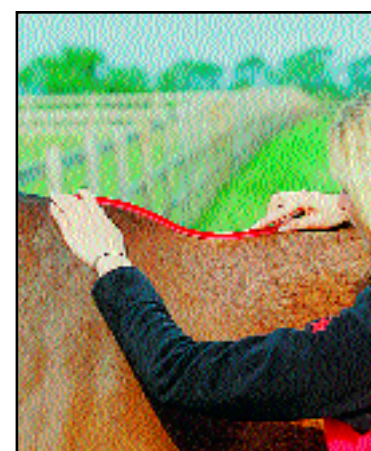
Step 4

Squeeze and shape the flexicurve so it hugs the contours of the horse's sides.



Step 5

Lift the flexicurve gently and put it down in exactly the same place – it should settle snugly if it has been moulded correctly. Transfer the shaped flexicurve onto the back width chart and draw along the inside.



Step 6

Next, making sure your horse is still standing properly, mould the flexicurve along his spine starting at the highest point of the withers. This measurement should also be taken from the nearside. Draw this shape onto the wither profile chart.



Saddle Size Chart - Back Width

Rider Name:

Rider Height:

Horse / Pony Name:

Horse / Pony Height:

Horse / Pony Age:

Back Width

To determine the width of your horse or pony's back, lay your shaped flexicurve on top of this guide. Line up the centre with the red cross and draw along the inside of the arch, continuing 6" (15cms) down each side in the colour coded areas at either end of the chart. Read your horse's width fitting using the colour coded key below.

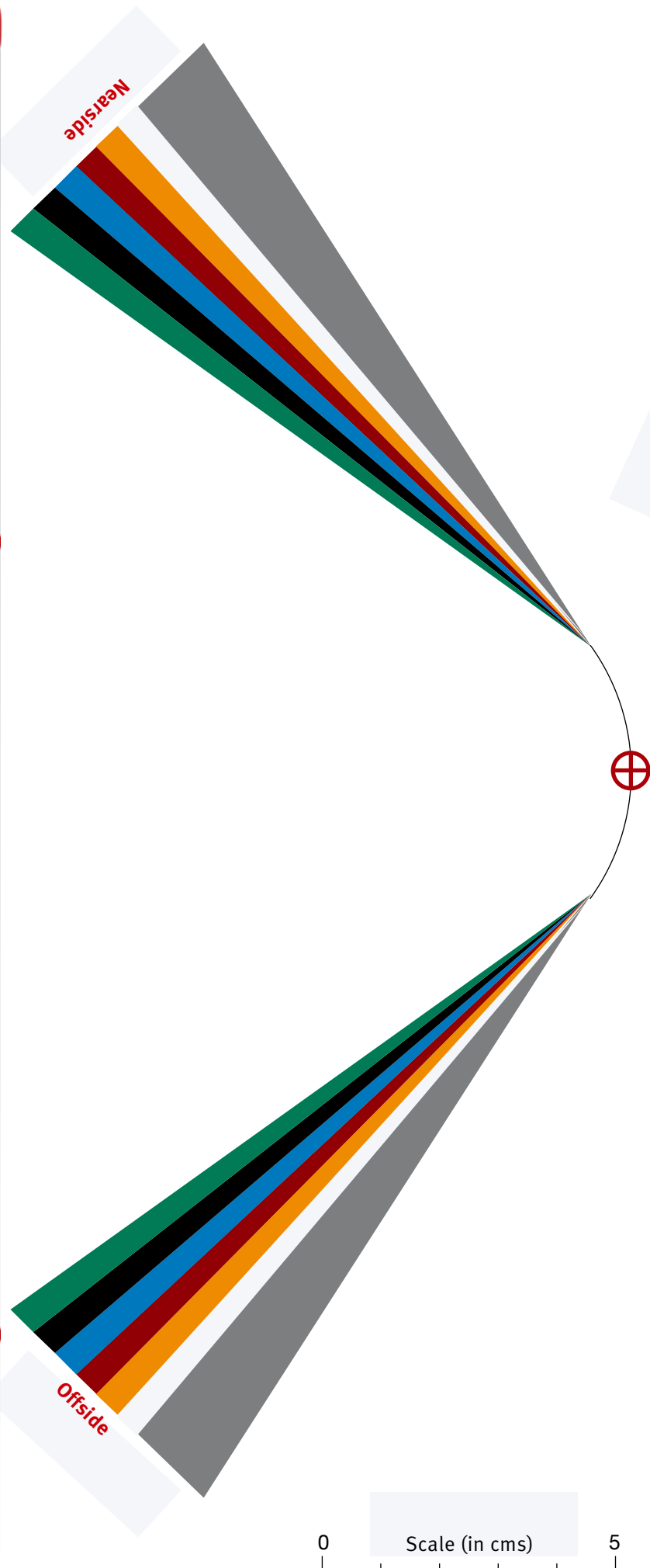
If you are in any doubt consult your local stockist or qualified saddle fitter for more advice.

-  Narrow / Medium
-  Medium
-  Medium / Wide
-  Wide
-  Wide / Extra Wide
-  Extra Wide
-  Extra Extra Wide

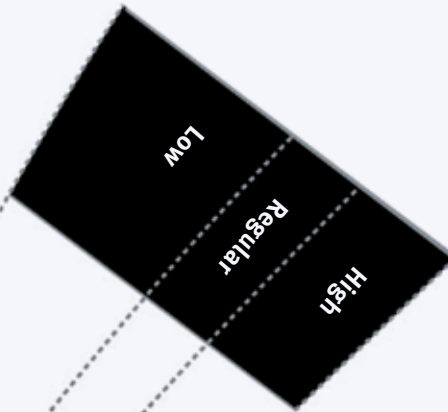
Important

This chart is only to be used with Thorowgood saddles as width fittings may vary among saddle manufacturers.

Please ensure that your printers settings are configured to print at 1:1 scale by using the scale (right) as a guide. **TIP - We recommend that you do not use "Fit to Page" or variants of this print setting.**



Saddle size chart - Wither profile



This chart is only to be used with Thorowgood saddles, as width fittings may vary among saddle manufacturers.

Rider

Name:

Age:

Height:

Upper leg length:

Weight:

Horse or pony

Name:

Age:

Sex:

Breed:

Height:

Date measurements taken:

Wither profile
To determine the wither profile, first lay your flexicurve below making sure that the right-hand end (the end that was nearest the tail) is lined up exactly with the red line between the two red crosses. Then draw along the **underside** of the flexicurve and read the fitting from the black boxes on the left.

